

CLPB Antibody (C-term)
Affinity Purified Rabbit Polyclonal Antibody (Pab)
Catalog # AP9613b

Specification

CLPB Antibody (C-term) - Product Information

Application	WB,E
Primary Accession	Q9H078
Reactivity	Human
Host	Rabbit
Clonality	Polyclonal
Isotype	Rabbit IgG
Calculated MW	78729
Antigen Region	673-702

CLPB Antibody (C-term) - Additional Information

Gene ID 81570

Other Names

Caseinolytic peptidase B protein homolog, Suppressor of potassium transport defect 3, CLPB, HSP78, SKD3

Target/Specificity

This CLPB antibody is generated from rabbits immunized with a KLH conjugated synthetic peptide between 673-702 amino acids from the C-terminal region of human CLPB.

Dilution

WB~~1:1000

E~~Use at an assay dependent concentration.

Format

Purified polyclonal antibody supplied in PBS with 0.09% (W/V) sodium azide. This antibody is purified through a protein A column, followed by peptide affinity purification.

Storage

Maintain refrigerated at 2-8°C for up to 2 weeks. For long term storage store at -20°C in small aliquots to prevent freeze-thaw cycles.

Precautions

CLPB Antibody (C-term) is for research use only and not for use in diagnostic or therapeutic procedures.

CLPB Antibody (C-term) - Protein Information

Name CLPB ([HGNC:30664](#))

Synonyms SKD3

Function Functions as a regulatory ATPase and participates in secretion/protein trafficking process. Has ATP-dependent protein disaggregase activity and is required to maintain the solubility of key mitochondrial proteins (PubMed:[32573439](#), PubMed:[34115842](#), PubMed:[35247700](#), PubMed:[36170828](#), PubMed:[36745679](#)). Involved in mitochondrial-mediated antiviral innate immunity, activates RIG-I- mediated signal transduction and production of IFNB1 and pro- inflammatory cytokine IL6 (PubMed:[31522117](#)). Plays a role in granulocyte differentiation (PubMed:[34115842](#)).

Cellular Location

Mitochondrion intermembrane space

Tissue Location

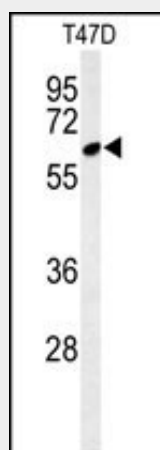
Widely expressed (at protein level) (PubMed:25597511). Expressed in fetal, as well as in adult tissues, with highest levels in adult brain, including thalamus, hippocampus, occipital cortex and parietal cortex. Low expression in granulocytes (PubMed:25597510).

CLPB Antibody (C-term) - Protocols

Provided below are standard protocols that you may find useful for product applications.

- [Western Blot](#)
- [Blocking Peptides](#)
- [Dot Blot](#)
- [Immunohistochemistry](#)
- [Immunofluorescence](#)
- [Immunoprecipitation](#)
- [Flow Cytometry](#)
- [Cell Culture](#)

CLPB Antibody (C-term) - Images



Western blot analysis of CLPB Antibody (C-term) (Cat. #AP9613b) in T47D cell line lysates (35ug/lane). CLPB (arrow) was detected using the purified Pab.

CLPB Antibody (C-term) - Background

CLPB may function as a regulatory ATPase and be related to secretion/protein trafficking process.

CLPB Antibody (C-term) - References

Acebron, S.P., et al. FEBS Lett. 583(18):2991-2996(2009)
Sowa, M.E., et al. Cell 138(2):389-403(2009)
Haslberger, T., et al. Nat. Struct. Mol. Biol. 15(6):641-650(2008)